

S1 Course 1 Support Videos and Links:

This pack contains many useful links to different websites that have videos, worksheets, and notes. You will also find your login details for mymaths in the Files folder on TEAMS.

If you are absent from class (and well enough to do so) please follow the course outline, find the topic you are on and try to keep up to date by watching the supporting videos and reading notes. You should try to attempt the homework set by your class teacher. This will be communicated through teams.

Remember you can always ask a reliable friend to send you a photo of class notes

Topics will be shared on Teams by the class teacher:

S1 : The full scheme of work can be found in the COURSE 1 tab.

Block 1

Place Value

Numbers to Words

Add/Subtract/Multiply/Divide Whole Numbers

Multiply/Divide by 10,100,1000. (Multiples of 10,100,1000)

Order of Operations

Number Machines

One Step/Two Step Equations

Forming Equations

Integers $+$ - \times \div

Coordinates

Here are some useful websites to help support you with Numeracy and the BGE course. Remember you can always search YouTube for help with specific topics.

[The Maths Hero](#)

[Study Pug](#)

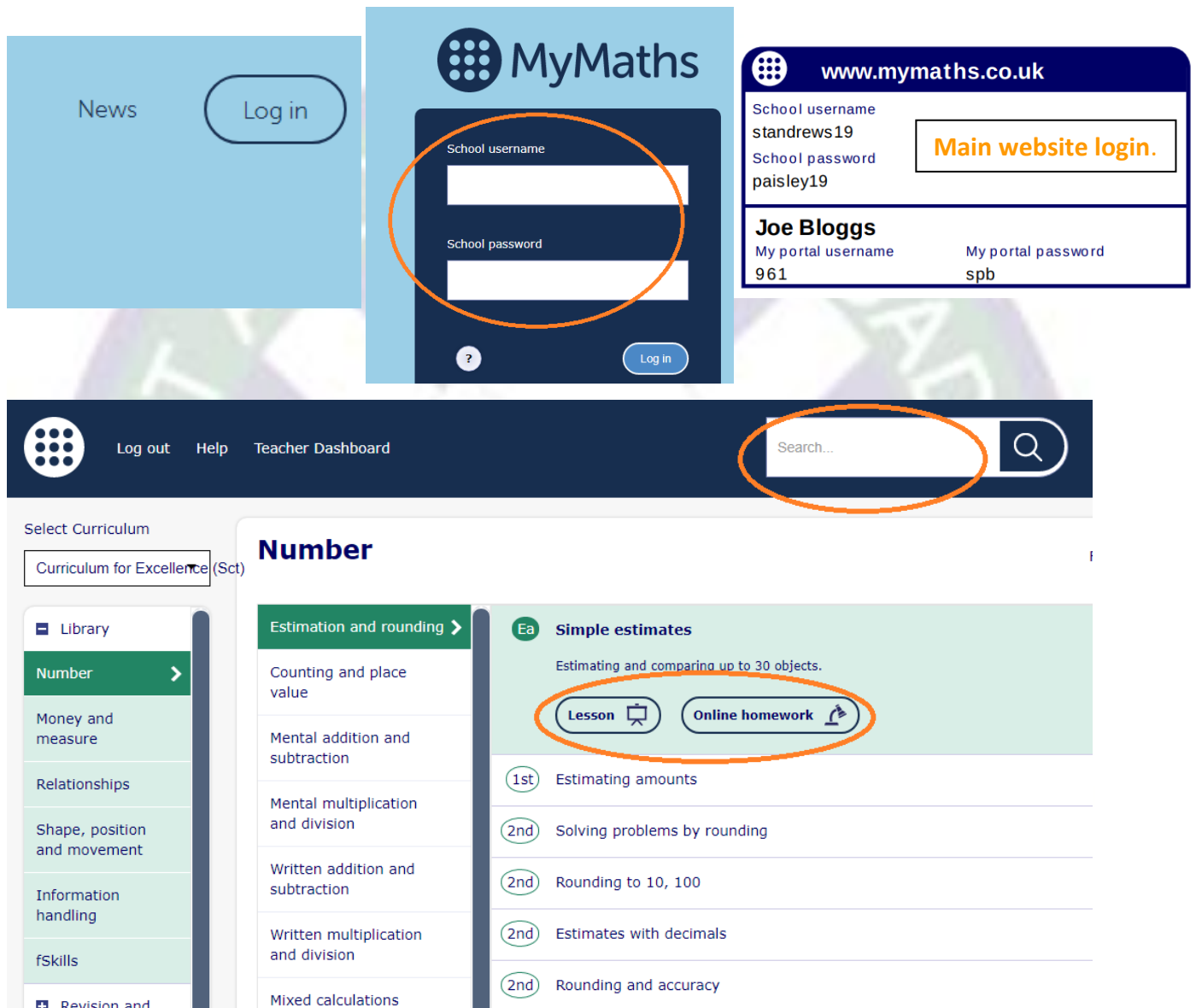
[Maths Antics](#)

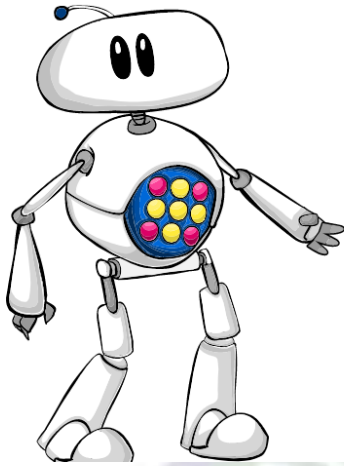
[BGE Worksheets](#)

[Numeracy Ninjas](#)

MYMATHS: [mymaths](http://mymaths.co.uk)

Your teacher will provide you with a username and password for the main website and the portal. After logging in, the homepage is a library of Maths topics at all levels, use the search bar to find the topic you are on. Click on Lesson and then Online homework. You will be able to access the practice homework without signing in. Please find screenshots below to help you.





Welcome!

You are probably here because your teacher has set you some homework.

Don't forget to log in!

Your teacher will not know that you have done your homework unless you log in with your username and password.

Username

Password

Log in

Would you like to practise?

Click the practice button if you only want to practise this homework task.

Practice

To access homework assigned to you by your teacher you will need to log in using your portal username and password.

Search...

My portal login

Filter Everything

tes

Comparing up to 30 objects.

Online homework

unts

is by rounding