

ST ANDREW'S ACADEMY

MUSIC DEPARTMENT

LEVEL 3



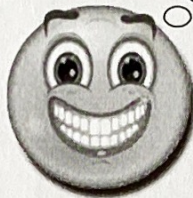
DRUM KIT



Outcomes

I will develop musical and technical skills, showing clear understanding of the composers' intentions
1.1

I will self-reflect on the quality and accuracy of my playing and performing, and identify personal strengths and areas for improvement
1.2



SUCCESSFUL DRUMMERS WILL :



- ✓ Know the various parts of the kit
- ✓ Play with good technique and posture
- ✓ Be able to read drum notation accurately
- ✓ Keep a steady beat and control smooth fills
- ✓ Be able to play in time with an accompaniment and maintain the overall tempo/flow of the music.

Level 3

Drum Kit

Styles

Rock

Blues

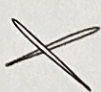
Shuffle

Swing




Drum Kit Technique

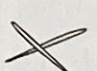
How to hold your sticks.

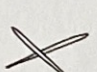
 Hold your drum sticks using “**matched grip**” – both sticks are held in the same way between your **thumb and first finger** with your other fingers curled loosely down below.

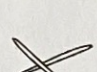
This allows the stick to bounce freely.

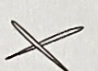
Keep approximately **2 centimetres** of stick past the crease of your wrist – this balances the stick properly.

 **NEVER** have your index finger down the stick – this stops it bouncing.

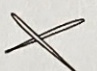
 **Your elbows** should be out slightly, with you sticks becoming extensions of your arms. **Never let your left arm rest on your leg!!**

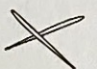
 Always **bounce the sticks** with the **tip of the stick** hitting the drum/cymbal- the heads should never rest on the skin of the drum.


 Do not “**chop**” the cymbal with the side of your stick – always play with the tip of the stick close to the edge of the cymbal.

 Always use your wrists as opposed to your arms to play – you do not have to hit the drum hard!

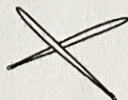
How to use your feet

 Your right foot plays the bass drum and your left foot plays the hi hat pedal.

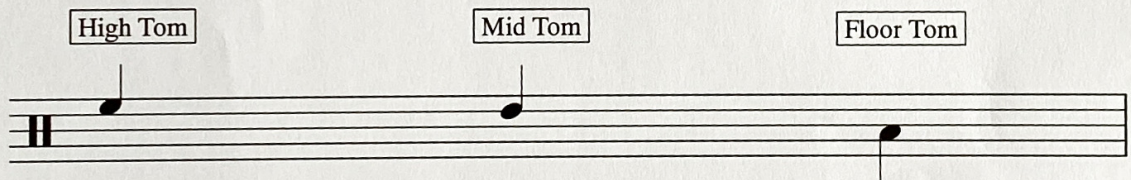
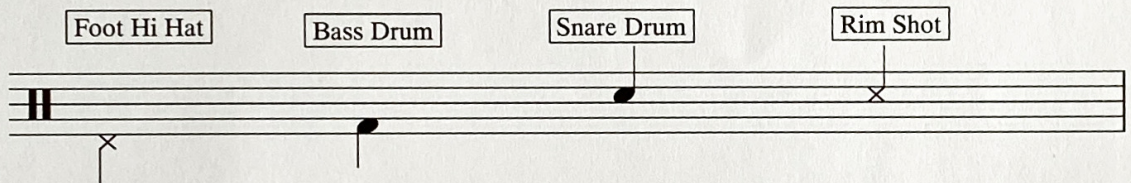
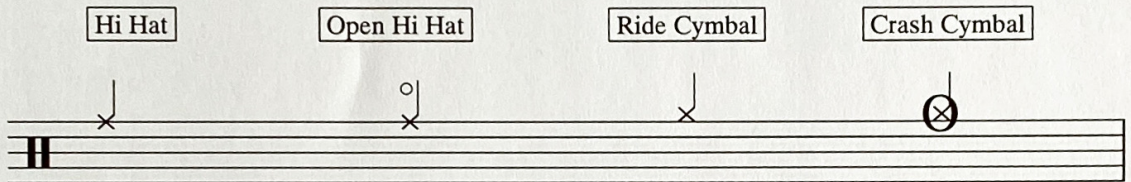
 Always make sure your **toes are in contact with the pedals.**

 Finally – practise lots and have fun!!

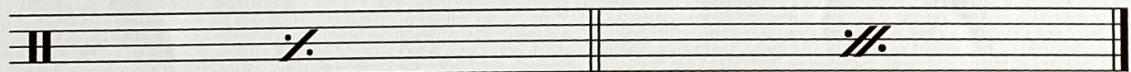
Good Luck!!



Drumkit Notation



4



Repeat the previous bar once

Repeat the previous 2 bars once

As you progress through the course, you will soon understand what parts of the kit are the correct ones to play!

Always remember to count whilst playing - this will ensure that you are playing what is written.

So get practising and enjoy!

Rock

Groove 1

1 + 2 + 3 + 4 + PLAY 3 TIMES

Hi HAT
BASS SNARE BASS SNARE

Detailed description: Groove 1 is a 4/4 drum pattern. The top staff shows a Hi HAT line with eighth notes on beats 1, 2, 3, and 4, each marked with an 'x'. Above the staff are plus signs between the numbers 1, 2, 3, and 4. The bottom staff shows a Bass and Snare line. On beat 1, the Bass plays a quarter note and the Snare plays a quarter note. On beat 2, the Bass plays a quarter note and the Snare plays a quarter note. On beat 3, the Bass plays a quarter note and the Snare plays a quarter note. On beat 4, the Bass plays a quarter note and the Snare plays a quarter note. A repeat sign is at the end of the staff.

Groove 2

1 + 2 + 3 + 4 + PLAY 3 TIMES

Detailed description: Groove 2 is a 4/4 drum pattern. The top staff shows a Hi HAT line with eighth notes on beats 1, 2, 3, and 4, each marked with an 'x'. Above the staff are plus signs between the numbers 1, 2, 3, and 4. The bottom staff shows a Bass and Snare line. On beat 1, the Bass plays a quarter note and the Snare plays a quarter note. On beat 2, the Bass plays a quarter note and the Snare plays a quarter note. On beat 3, the Bass plays a quarter note and the Snare plays a quarter note. On beat 4, the Bass plays a quarter note and the Snare plays a quarter note. A repeat sign is at the end of the staff.

Groove 3

1 + 2 + 3 + 4 + PLAY 3 TIMES

Detailed description: Groove 3 is a 4/4 drum pattern. The top staff shows a Hi HAT line with eighth notes on beats 1, 2, 3, and 4, each marked with an 'x'. Above the staff are plus signs between the numbers 1, 2, 3, and 4. The bottom staff shows a Bass and Snare line. On beat 1, the Bass plays a quarter note and the Snare plays a quarter note. On beat 2, the Bass plays a quarter note and the Snare plays a quarter note. On beat 3, the Bass plays a quarter note and the Snare plays a quarter note. On beat 4, the Bass plays a quarter note and the Snare plays a quarter note. A repeat sign is at the end of the staff.

Groove 4

1 + 2 + 3 + 4 + PLAY 3 TIMES

Detailed description: Groove 4 is a 4/4 drum pattern. The top staff shows a Hi HAT line with eighth notes on beats 1, 2, 3, and 4, each marked with an 'x'. Above the staff are plus signs between the numbers 1, 2, 3, and 4. The bottom staff shows a Bass and Snare line. On beat 1, the Bass plays a quarter note and the Snare plays a quarter note. On beat 2, the Bass plays a quarter note and the Snare plays a quarter note. On beat 3, the Bass plays a quarter note and the Snare plays a quarter note. On beat 4, the Bass plays a quarter note and the Snare plays a quarter note. A repeat sign is at the end of the staff.

2

Fill 1

TE TE TE TE TE TE TE TE

SNARE HIGH TOM MID TOM FLOOR TOM

R L R L R L R L

Detailed description: Fill 1 is a 4/4 drum fill. The top staff shows a Hi HAT line with eighth notes on beats 1, 2, 3, and 4, each marked with an 'x'. Above the staff are plus signs between the numbers 1, 2, 3, and 4. The bottom staff shows a Snare, High Tom, Mid Tom, and Floor Tom line. On beat 1, the Snare plays a quarter note. On beat 2, the High Tom plays a quarter note. On beat 3, the Mid Tom plays a quarter note. On beat 4, the Floor Tom plays a quarter note. A repeat sign is at the end of the staff.

Fill 2

TE TE TE RI TI RI TE TE TE TE

SNARE HIGH TOM MID TOM FLOOR TOM

R L R L R L R L R L

Detailed description: Fill 2 is a 4/4 drum fill. The top staff shows a Hi HAT line with eighth notes on beats 1, 2, 3, and 4, each marked with an 'x'. Above the staff are plus signs between the numbers 1, 2, 3, and 4. The bottom staff shows a Snare, High Tom, Mid Tom, and Floor Tom line. On beat 1, the Snare plays a quarter note. On beat 2, the High Tom plays a quarter note. On beat 3, the High Tom plays a quarter note. On beat 4, the Mid Tom plays a quarter note. A repeat sign is at the end of the staff.

Fill 3

TE TE TI RI TI RI TI RI TI RI TE TE

R L R L R L R L R L R L

Detailed description: Fill 3 is a 4/4 drum fill. The top staff shows a Hi HAT line with eighth notes on beats 1, 2, 3, and 4, each marked with an 'x'. Above the staff are plus signs between the numbers 1, 2, 3, and 4. The bottom staff shows a Snare, High Tom, Mid Tom, and Floor Tom line. On beat 1, the Snare plays a quarter note. On beat 2, the High Tom plays a quarter note. On beat 3, the High Tom plays a quarter note. On beat 4, the Mid Tom plays a quarter note. A repeat sign is at the end of the staff.

Fill 4

TI RI TI RI TI RI TI RI TI RI TI RI TI RI TI RI

R L R L R L R L R L R L R L

Detailed description: Fill 4 is a 4/4 drum fill. The top staff shows a Hi HAT line with eighth notes on beats 1, 2, 3, and 4, each marked with an 'x'. Above the staff are plus signs between the numbers 1, 2, 3, and 4. The bottom staff shows a Snare, High Tom, Mid Tom, and Floor Tom line. On beat 1, the Snare plays a quarter note. On beat 2, the High Tom plays a quarter note. On beat 3, the High Tom plays a quarter note. On beat 4, the Mid Tom plays a quarter note. A repeat sign is at the end of the staff.

ANOTHER ONE BITES THE DUST

WORDS AND MUSIC: JOHN DEACON

Intro

Solid Rock Feel ♩ = 100 (2 bars count-in)

Musical notation for the Intro section, measures 1-4. The notation is on a single staff with a treble clef and a 4/4 time signature. It begins with a double bar line and a repeat sign. The first two measures contain a bass line with quarter notes and a guitar part with eighth notes marked with 'x's. The next two measures are marked with a repeat sign. The section ends with a double bar line and a repeat sign. The dynamic marking *mf* is placed below the first measure. The number (4) is written at the end of the staff.

Verse

Musical notation for the Verse section, measures 5-8. The notation is on a single staff with a treble clef and a 4/4 time signature. It begins with a double bar line and a repeat sign. The first two measures contain a bass line with quarter notes and a guitar part with eighth notes marked with 'x's. The next two measures are marked with a repeat sign. The section ends with a double bar line and a repeat sign. The number (4) is written at the end of the staff.

Musical notation for the Verse section, measures 9-12. The notation is on a single staff with a treble clef and a 4/4 time signature. Measures 9-11 are marked with a repeat sign. Measure 12 contains a bass line with quarter notes and a guitar part with eighth notes. The section ends with a double bar line and a repeat sign.

Chorus

Musical notation for the Chorus section, measures 13-16. The notation is on a single staff with a treble clef and a 4/4 time signature. It begins with a double bar line and a repeat sign. The first two measures contain a bass line with quarter notes and a guitar part with eighth notes marked with 'x's. The next two measures are marked with a repeat sign. The section ends with a double bar line and a repeat sign.

Musical notation for the Chorus section, measures 17-20. The notation is on a single staff with a treble clef and a 4/4 time signature. It begins with a double bar line and a repeat sign. The first two measures contain a bass line with quarter notes and a guitar part with eighth notes marked with 'x's. The next two measures are marked with a repeat sign. The section ends with a double bar line and a repeat sign.

Musical notation for the Chorus section, measures 21-24. The notation is on a single staff with a treble clef and a 4/4 time signature. It begins with a double bar line and a repeat sign. The first two measures contain a bass line with quarter notes and a guitar part with eighth notes marked with 'x's. The next two measures are marked with a repeat sign. The section ends with a double bar line and a repeat sign. The dynamic marking *f* is placed below the first measure of the final two measures.

Blues

Groove 1

1 + A 2 + A 3 + A 4 + A PLAY 3 TIMES

R

BASS SNARE BASS SNARE

Groove 2

1 + A 2 + A 3 + A 4 + A PLAY 3 TIMES

R

BASS SNARE BASS BASS SNARE

Groove 3

1 + A 2 + A 3 + A 4 + A PLAY 3 TIMES

R

Groove 4

1 + A 2 + A 3 + A 4 + A PLAY 3 TIMES

R

Fill 1

1 + A 2 + A 3 + 1 4 + 1

R L R L R L R L R L R L

Fill 2

1 + A 2 + A 3 + A 4 A

R L R L R L R L R R L

Fill 3

1 + A 2 + A 3 A 4 A

R L R L R L R R L L

Fill 4

1 + A 2 A 3 A 4 A

R L R L L R L R L

Blues Level 3

1 + A 2 + A 3 + A 4 + A

RIDE

A HI HAT

CRASH

B

C RIDE

CRASH

Shuffle

Groove 1



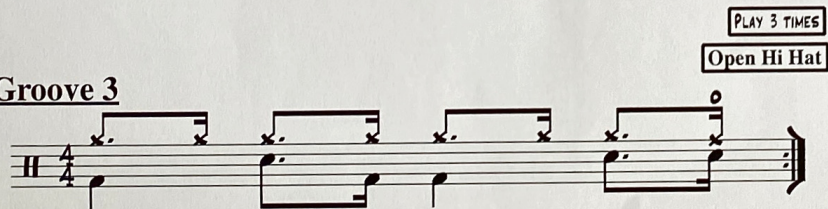
Musical notation for Groove 1 in 4/4 time. The notation shows a sequence of four measures, each containing a triplet of eighth notes. Above the notes are the labels 'TEM' and 'RI'. A box above the final measure contains the instruction 'PLAY 3 TIMES'.

Groove 2



Musical notation for Groove 2 in 4/4 time. The notation shows a sequence of four measures, each containing a triplet of eighth notes. Above the notes are the labels 'TEM' and 'RI'. A box above the final measure contains the instruction 'PLAY 3 TIMES' and another box below it contains the instruction 'Open Hi Hat'.

Groove 3



Musical notation for Groove 3 in 4/4 time. The notation shows a sequence of four measures, each containing a triplet of eighth notes. Above the notes are the labels 'TEM' and 'RI'. A box above the final measure contains the instruction 'PLAY 3 TIMES' and another box below it contains the instruction 'Open Hi Hat'.

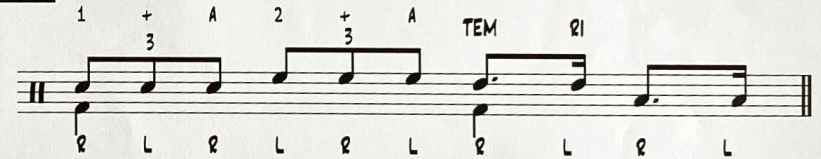
2

Fill 1



Musical notation for Fill 1 in 4/4 time. The notation shows a sequence of four measures, each containing a triplet of eighth notes. Above the notes are the labels '1 + 3 A TEM RI'. Below the notes are the labels 'R L R R L R L R L'.

Fill 2



Musical notation for Fill 2 in 4/4 time. The notation shows a sequence of four measures, each containing a triplet of eighth notes. Above the notes are the labels '1 + 3 A 2 + 3 A TEM RI'. Below the notes are the labels 'R L R L R L R L R L'.

Fill 3



Musical notation for Fill 3 in 4/4 time. The notation shows a sequence of four measures, each containing a triplet of eighth notes. Above the notes are the labels '1 + 3 A 4 A 3 + 3 A 4 A'. Below the notes are the labels 'R L R L R R L R L R'.

Swing

Groove 1

RISE CYMBAL

PLAY 3 TIMES

Groove 2

RISE CYMBAL

PLAY 3 TIMES

FOOT HI HAT

Groove 3

OPEN HI HAT

PLAY 3 TIMES

FOOT HI HAT

2

Fill 1

3

Fill 2

3

Fill 3

3

TECHNICAL FOCUS SONGS



demo backing
17 with click
18 without click

ROCK AROUND THE CLOCK

Bill Haley And His Comets

Words and Music by Max C. Freedman and Jimmy De Knight

♩ = 140 Swing shuffle 2 bars count-in

Intro

vocal cue

"One, two, three o'clock..."

Musical notation for the first line of the Intro, starting with a 2-bar count-in. The first measure is a whole rest. The second measure contains a quarter note G4, a quarter note A4, and a quarter note B4. The dynamic marking *mf* is placed below the staff.

vocal cue

"Put your..."

Musical notation for the second line of the Intro, continuing the melody from the first line.

Verses 1 & 2

Musical notation for the first line of Verses 1 & 2, starting with a double bar line and a repeat sign. It includes a drum pattern with 'x' marks above the notes. The measure number 21 is indicated at the start, and the measure number 24 is at the end.

Musical notation for the second line of Verses 1 & 2, consisting of four measures with slash marks indicating drum patterns.

Musical notation for the third line of Verses 1 & 2, featuring a first ending (1.) and a second ending (2.). The first ending includes a vocal cue "When the..." and ends with a repeat sign. The second ending consists of two measures of eighth notes. Measure numbers 29, 32, and 35 are indicated.

Guitar solo

Ride

Musical notation for the first line of the Guitar solo, starting with a double bar line and a repeat sign. It includes a drum pattern with 'x' marks above the notes. The dynamic marking *f* is placed below the staff. Measure numbers 33 and 36 are indicated.

Musical notation for the second line of the Guitar solo, consisting of four measures with slash marks indicating drum patterns.

Musical notation for the third line of the Guitar solo, ending with a 'fill' section indicated by a diagonal line through the notes. Measure number 39 is indicated.

Outro

Musical notation for the Outro, starting with a double bar line and a repeat sign. It includes a drum pattern with 'x' marks above the notes. Measure number 41 is indicated.

1952 Myers Music Inc
Edward Kassner Music Co. Ltd