

ST ANDREW'S ACADEMY

MUSIC DEPARTMENT

LEVEL 2



KEYBOARD/GLOCK



## INTRODUCTION

### KEYBOARD

#### Getting started:

- ♫ Make sure your headphones are plugged in!
- ♫ Turn On your Keyboard
- ♫ Set the mode to **Casio Chord/Accomp.**
- ♫ Set your Tone, Rhythm and Tempo



#### SUCCESSFUL KEYBOARD PLAYERS WILL:

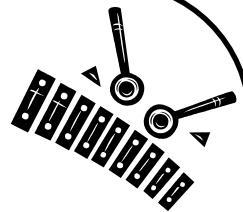


- ✓ Play the melody with their right hand with the correct notes, rhythms and fingering
- ✓ Have smooth chord changes with their left hand
- ✓ Will play in time with the backing rhythm on the keyboard.
- ✓ Will have set up their keyboard correctly.

### GLOCK

#### Getting Started:

- ♫ You need a Glock, a music stand and 2 beaters
- ♫ Hold the beaters loosely between your index finger and your thumb and curl the rest of your fingers around the end of the stick.



#### SUCCESSFUL GLOCK PLAYERS WILL:



- ✓ Play the melody using the correct notes and rhythms
- ✓ Will use both beaters
- ✓ Will be able to play in time with an accompaniment.



## Starting Out

Tone: Own Choice

Rhythm: Disco

Tempo: 100

Keyboard Fingering

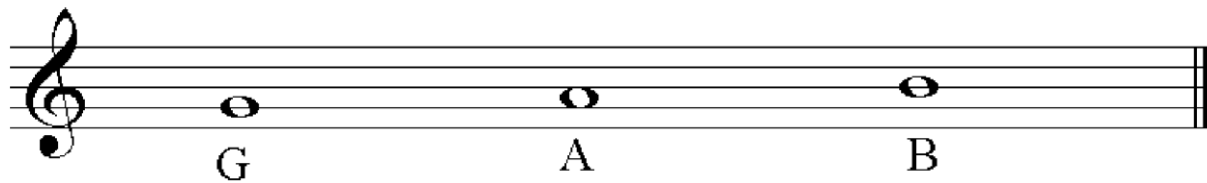
A musical staff in treble clef with a key signature of one sharp (F#) and a 4/4 time signature. It contains two lines of music. The first line has four measures: G (quarter), G (quarter), D (quarter), D (quarter). The second line has four measures: G (quarter), D (quarter), D (quarter), G (quarter). Above the notes are boxes containing the letters 'G' and 'D'. Numbers 1, 2, and 3 indicate fingerings for the notes. A box labeled 'Keyboard Fingering' has an arrow pointing to the first 'G' note in the first measure of the first line.

## Starting Out

GLOCK EXTENSION

Both Hands Together

Two musical staves in treble clef with a key signature of one sharp (F#). The first staff has four measures: G (quarter), G (quarter), D (quarter), D (quarter). The second staff has four measures: G (quarter), D (quarter), D (quarter), G (quarter). Below the first staff is the label 'R' and below the second staff is the label 'L', indicating right and left hand parts.



## 3 Note Rock

Tone: Overdriven Guitar

Rhythm: Slow Rock 2

Tempo: 100

Keyboard Fingering

The first staff is in treble clef with a key signature of one sharp (F#) and a 4/4 time signature. It contains four measures of music. The first measure has a quarter note G (fingered 1), an eighth note A (fingered 2), and an eighth note B (fingered 3). The second measure has a quarter note G, an eighth note A, and an eighth note B. The third measure has a quarter note G, an eighth note A, and an eighth note B. The fourth measure has a quarter note G, an eighth note A, and an eighth note B. Above the staff are three boxes labeled G, D, and G, each with a vertical line pointing to the corresponding measure.

The second staff is in treble clef with a key signature of one sharp (F#). It contains four measures of music. The first measure has a quarter note G, an eighth note A, and an eighth note B. The second measure has a quarter note G, an eighth note A, and an eighth note B. The third measure has a quarter note G, an eighth note A, and an eighth note B. The fourth measure has a quarter note G, an eighth note A, and an eighth note B. Above the staff are three boxes labeled G, D, and G, each with a vertical line pointing to the corresponding measure.

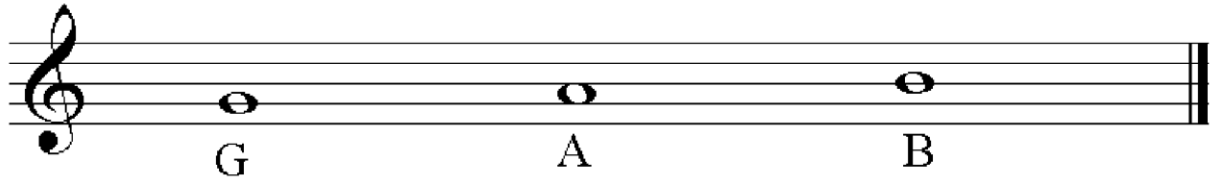
## 3 Note Rock

GLOCK EXTENSION

Both Hands Together

The first staff is in treble clef with a key signature of one sharp (F#). It contains four measures of music. The first measure has a quarter note G, an eighth note A, and an eighth note B. The second measure has a quarter note G, an eighth note A, and an eighth note B. The third measure has a quarter note G, an eighth note A, and an eighth note B. The fourth measure has a quarter note G, an eighth note A, and an eighth note B. Above the staff is a box labeled 'Both Hands Together'. Below the staff are the letters 'R' and 'L'.

The second staff is in treble clef with a key signature of one sharp (F#). It contains four measures of music. The first measure has a quarter note G, an eighth note A, and an eighth note B. The second measure has a quarter note G, an eighth note A, and an eighth note B. The third measure has a quarter note G, an eighth note A, and an eighth note B. The fourth measure has a quarter note G, an eighth note A, and an eighth note B.



# Merrily We Roll Along

Tone: Flute  
Rhythm: Rock  
Tempo: 100

Keyboard Fingering

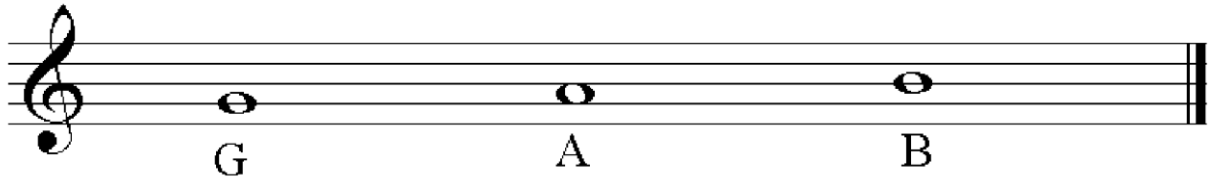
A musical staff in treble clef with a key signature of one sharp (F#) and a 4/4 time signature. The melody consists of eight measures. Above the staff, three boxes labeled 'G', 'D', and 'G' indicate the chords for the first, third, and fifth measures. Fingerings are indicated by numbers 1, 2, and 3 above the notes. The first measure has notes G4, A4, B4, A4 with fingerings 3, 2, 1, 2. The second measure has notes B4, A4, G4 with fingering 3. The third measure has notes G4, A4, B4 with fingering 3. The fourth measure has notes A4, G4, F#4 with fingering 3. The fifth measure has notes F#4, G4, A4 with fingering 2. The sixth measure has notes A4, B4, A4 with fingering 3. The seventh measure has notes G4, A4, B4 with fingering 2. The eighth measure has notes A4, G4, F#4 with fingering 1. The staff ends with a double bar line.

# Merrily We Roll Along

GLOCK EXTENSION

Both Hands Together

A musical staff in treble clef with a key signature of one sharp (F#). It contains two systems of music. The first system has four measures of chords: G4, B4, D5; A4, C5, E5; F#4, A4, C5; and B4, D5, F#5. The second system has four measures of chords: G4, B4, D5; A4, C5, E5; F#4, A4, C5; and G4, B4, D5. The staff ends with a double bar line.



## 3's A Crowd

Tone: Alto Saxophone

Rhythm: Big Band

Tempo: 95

Keyboard Fingering

A musical staff in treble clef with a key signature of one sharp (F#) and a 4/4 time signature. It contains four measures of music. Above the staff are four boxes containing the letters G, D, D, and G. Below the staff are fingering numbers: 1, 3, 2, 1. The notes are: G (quarter), D (quarter), D (quarter), G (quarter) in the first measure; D (quarter), D (quarter), G (quarter), G (quarter) in the second measure; D (quarter), D (quarter), G (quarter), G (quarter) in the third measure; and G (quarter), G (quarter), G (quarter), G (quarter) in the fourth measure.

A musical staff in treble clef with a key signature of one sharp (F#). It contains four measures of music. Above the staff are four boxes containing the letters G, D, D, and G. The notes are: G (quarter), D (quarter), D (quarter), G (quarter) in the first measure; D (quarter), D (quarter), G (quarter), G (quarter) in the second measure; D (quarter), D (quarter), G (quarter), G (quarter) in the third measure; and G (quarter), G (quarter), G (quarter), G (quarter) in the fourth measure.

## 3's A Crowd

GLOCK EXTENSION

Both Hands Together

Two musical staves in treble clef with a key signature of one sharp (F#). The top staff is labeled 'R' (Right hand) and the bottom staff is labeled 'L' (Left hand). Both staves contain a sequence of chords: G, D, D, G in the first measure; D, D, G, G in the second measure; D, D, G, G in the third measure; and G, G, G, G in the fourth measure. The chords are represented by pairs of notes on the staves.